

Архангельск (8182)63-90-72  
Астана +7(7172)727-132  
Белгород (4722)40-23-64  
Брянск (4832)59-03-52  
Владивосток (423)249-28-31  
Волгоград (844)278-03-48  
Вологда (8172)26-41-59  
Воронеж (473)204-51-73  
Екатеринбург (343)384-55-89  
Иваново (4932)77-34-06  
Ижевск (3412)26-03-58  
Казань (843)206-01-48

Калининград (4012)72-03-81  
Калуга (4842)92-23-67  
Кемерово (3842)65-04-62  
Киров (8332)68-02-04  
Краснодар (861)203-40-90  
Красноярск (391)204-63-61  
Курск (4712)77-13-04  
Липецк (4742)52-20-81  
Магнитогорск (3519)55-03-13  
Москва (495)268-04-70  
Мурманск (8152)59-64-93  
Набережные Челны (8552)20-53-41

Нижний Новгород (831)429-08-12  
Новокузнецк (3843)20-46-81  
Новосибирск (383)227-86-73  
Орел (4862)44-53-42  
Оренбург (3532)37-68-04  
Пенза (8412)22-31-16  
Пермь (342)205-81-47  
Ростов-на-Дону (863)308-18-15  
Рязань (4912)46-61-64  
Самара (846)206-03-16  
Санкт-Петербург (812)309-46-40  
Саратов (845)249-38-78

Смоленск (4812)29-41-54  
Сочи (862)225-72-31  
Ставрополь (8652)20-65-13  
Тверь (4822)63-31-35  
Томск (3822)98-41-53  
Тула (4872)74-02-29  
Тюмень (3452)66-21-18  
Ульяновск (8422)24-23-59  
Уфа (347)229-48-12  
Челябинск (351)202-03-61  
Череповец (8202)49-02-64  
Ярославль (4852)69-52-93

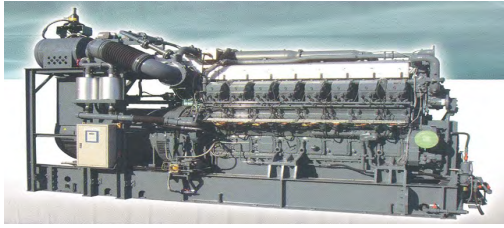
Единый адрес для всех регионов: <http://aksa.nt-rt.ru/> || [ajk@nt-rt.ru](mailto:ajk@nt-rt.ru)

# AMG 1500

Газовая генераторная установка  
Технические характеристики

# AMG 1500

Engine : MITSUBISHI  
 Alternator : STAMFORD  
 Control System : P CM control system



**ISO 8528** This generator set has been designed to meet ISO 8528 regulation.

**SZUTEST** This generator set is manufactured in facilities certified to ISO 9001.

**CE** This generator set is available with CE certification.

**2000/14/EC** Enclosed product is tested EU noise legislation 2000/14/EC

**Rated Power, 3 Phase, 50 Hz, PF 0,8**

Voltage	Continuous Rating (CRP)	Continuous Rating (CRP)	
	kVA	kW	Amp
400/230	1800	1440.00	2598.00

Continuous Rating (CRP):

Applicable for supplying power to varying electrical load for unlimited hours. CRP is in accordance with ISO 8528. No overload capability.

- With Remote Radiator

**Optional Equipments**

**ENGINE**

- Low Coolant level alarm
- Oil heater

**WISE ACCESSORIES**

- Manual oil drain pump
- Electrical oil drain pump
- Enclosure: weater protective or sound attenuated
- Duct adapter ( on radiator)
- Inlet and outlet motorised louvers
- Tool kit for maintenance
- 1.500/3.000/10.000 hours maintenance kit
- Four Pole Contactor

**ALTERNATOR**

- Anti-Condensation heater
- Over sized alternator
- Single Phase ( 4 lead)
- Main line circuit breaker

**CONTROL SYSTEM**

- Automatic synchronising and power control system ( multi gen-set Parallel )
- Paralel system with mains.
- Remote annunciator panel
- Alarm output relays
- Remote communication with modem
- Earth fault, single set
- Charging ammeter

# AMG 1500

Engine : MITSUBISHI  
 Alternator : STAMFORD  
 Control System : P CM control system

## • Natural Gas Powered Engine Specification

Manufacturer		Mitsubishi
Model		GS16R2 - PTK
Aspiration and Cooling		Turbo Charged and Intake Air Cooler
Maximum Continuous Power	1500 d/dk	1562.5kW
Total Displacement and Number of Cylinder	L	79.9 - 16V
Bore and Stroke	Bore and Stroke	170 x 220
Compression Ratio		00 : 0
Rated Speed	rpm	1500
Governor		Electronic
Fuel Consumption	m <sup>3</sup> /h	351.5 ±5% (methane number above 80)
Gas Pressure	bar	3.5 - 6.0
Oil Capacity	L	460
Water Capacity	L	245 engine jacket and intercooler
Lube oil Consumption	g / kWh	0,34 (At 100% Load)
Exhaust Backpressure	mbar	45
Exhaust Gas Flow	kg/h	6340
Exhaust Gas Temperatures	° C	417
NOx Emission		320ppm

## • Alternator Specification

Manufacturer		STAMFORD
Model		
Power	kW	1520
Design		Brushless, 4-pole
Cos fi		0.8
Phase		3
Voltage	V	400/230
Current	A	2742
Insulation Class		H
Stator		2 / 3 steps
Excitation System		Brushless excitation system with static exciter

## • Dimensions and Weight

Open Type	Dry Weight	Lenght	Width	Height
	kg.	mm.	mm.	mm.
AMG 1500	16000	5727	2173	2472
Sound Attenuated Type	Dry Weight	Lenght	Width	Height
	kg.	mm.	mm.	mm.
SCH 40	22030	12200	2440	2800

# AMG 1500

Engine : MITSUBISHI  
Alternator : STAMFORD  
Control System : P CM control system

## ● COMAP CONTROL MODULE



GeCon controllers provide comprehensive generator protection and control for single or multiple gen-sets based on field proven IntelliGenNT and IntelliSysNT platforms. With GeCon software installed the primary function of the controller is to manage and protect the generator in preference to the engine, which is not a direct concern, and as such, can be used in applications where engine management or protection is not required or in cases where the generator is powered by another source such as a turbine controlled by an external PLC.

Two versions of the GeCon software are available (land-based or marine applications) allowing customers to select a tailored solution for their application. There is also the option to modify certain parameters for critical applications. A built-in synchronizer and digital isochronous load sharer allows for a total integrated solution for gen-sets in standby, island parallel or mains parallel. The GeCon allows parallel operation of up to 32 gen-sets in one group with power management and load sharing. For critical applications, it is possible to arrange the controllers so a 'hot-standby' controller takes over the generator protection and control in case of failure of the main controller. A powerful graphic display with userfriendly controls allows any user, whatever their ability to find the information they need.



# AMG 1500

Engine : MITSUBISHI  
Alternator : STAMFORD  
Control System : P CM control system

## Benefits

- Excellent configurability enables users to customise to the needs of their application
- Option to read information from ECU
- Power management over various engines from different producers
- Configurable protections
- Optional set the frequency by step 0,1 Hz
- Choice of communication options ensures easy remote supervising and servicing
- Optional redundant 'hot standby' controller guarantees uninterrupted generator control in case of failure of the primary controller
- Built-in PLC functions remove the need for an external PLC controller
- Perfect price/performance ratio
- Gen-set performance log for easy problem tracing
- Blackout start of engines1)
- Running of SPI and SPTM applications without dongle2

## Generator Monitoring and Control

- Independent engine controller (e.g. IntelliDrive DCU) is required
- Generator measurement: U, I, Hz, kW, kVAr, kVA, PF, kWh, kVAhr
- Bus/Mains measurement: U, I, Hz, kW, kVAr, kVA, PF
- Auto and Test operational modes
- Automatic Load sharing and Power management in MINT applications3)
- Automatic synchronizing and Voltage control in Auto mode
- Power management: kW, kVA or % load based – in Auto mode
- Baseload, Import/Export, Peak shaving
- All binary/analog inputs are configurable for various protection types

## Generator Protections

- 3 phase generator over/under voltage
- 3 phase generator over/under frequency
- Generator overload, Short current and IDMT overcurrent
- Voltage and current unbalance4), Bus voltage unbalance4), Reverse power4), Earth fault current protection4), ROCOF4)
- Additional 160 user configurable generator and bus/mains protections

### • Electronic Charge Equipment

6UHVfmVXUf[Yf]g'a Ubi ZUVi fYX'k Jh'gk JhVX]b[!a cXY'UbX'GA 8'fYVX'bc'c[ mUbX'ih\Ug\][ \YZZ]bVWf  
6UHVfmVXUf[Yf'a cXY'gfci hdi hJ !=VXUfUWVf]gh]W]g] YfmWcgy'hc'gei Ufy'UbX'ci hdi h]g') Ua dYfZ&( 'j c'h87'"-bdi h%, !  
&\*\$'j c'h57'"&(\$) \Ug'Z'`mci hdi hg\chVfW]hdfchVW]cb UbX'ihWUb'VY i gYX'Ug'U'W'ffYbhgci fW"  
&(\$) \VXUf[Yf'\Ug\][ \YZZ]VYbVWz`cb[ ``ZYz`ck'ZU]i fY'fUfYZ`][ \hk Y][ \hUbX`ck \YUhfUX]UfYX'j b'UWVcfXUbW'k Jh'`]bYUf  
U'fYfbU]j Yg"  
H\Y'VXUf[Yf]g'Z]hVX'k Jh'U'dfchVW]cb X]cXY'UWVcgg'h\Y'ci hdi h'7'Uf[Y'ZU]`ci hdi h]g'Uj U]UV'Y'"7 cbbYVWVXUf[Y'ZU]`fY'Um  
Vz]`VY'hk Yyb'dcg]h]j Y'ci hdi hUbX'7: `ci hdi h'

# AMG 1500

Engine : MITSUBISHI  
 Alternator : STAMFORD  
 Control System : P CM control system

## ● SCH 40



## ● Introduction

Sound-attenuated and weather protective enclosures for generating sets from Akxa, meet even the sound requirements and provide optimum protection from inclement weather and development by our specialist acoustic engineers. Our sound insulated containers provide ease of access for servicing and general maintenance permitting on-site. Enclosures are designed to optimize genset cooling performance, providing you with confidence that genset ratings and ambient capability.

## ● Standard Specifications

- Robustly constructed walk in enclosure designed provide the necessary weather protection, sound attenuation and ventilation for the generator and switchgear.
- Ribbed aluminium sheet internal floor
- Ceiling mounted fluorescent light fittings
- RAL 9010 white painted finish
- Corner fittings to ISO 1161, providing four point lifting capability for full wet weight
- Personel access doors and internal panic release button on one of door.
- Exhaust silencer is horizontally mounted on top of enclosure roof and available dependant on size of generators and options selected
- Protective grille for fan, rotating parts and hot parts
- Removable enclosure roof
- Steel ladder for roof
- Fuel tank complete with retention bund, contents gauge, vent and manual fuel fill point
- Power cable outlet on lower section
- Akxa makes its generating sets' noise level tests in accordance with directive 2000/14/EC validation of the noise level test has been aproved by the notified body Szutest

Canopy Model		SCH 40
Width	mm.	12200
Lenght	mm.	2440
Height	mm.	2800

Архангельск (8182)63-90-72  
Астана +7(7172)727-132  
Белгород (4722)40-23-64  
Брянск (4832)59-03-52  
Владивосток (423)249-28-31  
Волгоград (844)278-03-48  
Вологда (8172)26-41-59  
Воронеж (473)204-51-73  
Екатеринбург (343)384-55-89  
Иваново (4932)77-34-06  
Ижевск (3412)26-03-58  
Казань (843)206-01-48

Калининград (4012)72-03-81  
Калуга (4842)92-23-67  
Кемерово (3842)65-04-62  
Киров (8332)68-02-04  
Краснодар (861)203-40-90  
Красноярск (391)204-63-61  
Курск (4712)77-13-04  
Липецк (4742)52-20-81  
Магнитогорск (3519)55-03-13  
Москва (495)268-04-70  
Мурманск (8152)59-64-93  
Набережные Челны (8552)20-53-41

Нижний Новгород (831)429-08-12  
Новокузнецк (3843)20-46-81  
Новосибирск (383)227-86-73  
Орел (4862)44-53-42  
Оренбург (3532)37-68-04  
Пенза (8412)22-31-16  
Пермь (342)205-81-47  
Ростов-на-Дону (863)308-18-15  
Рязань (4912)46-61-64  
Самара (846)206-03-16  
Санкт-Петербург (812)309-46-40  
Саратов (845)249-38-78

Смоленск (4812)29-41-54  
Сочи (862)225-72-31  
Ставрополь (8652)20-65-13  
Тверь (4822)63-31-35  
Томск (3822)98-41-53  
Тула (4872)74-02-29  
Тюмень (3452)66-21-18  
Ульяновск (8422)24-23-59  
Уфа (347)229-48-12  
Челябинск (351)202-03-61  
Череповец (8202)49-02-64  
Ярославль (4852)69-52-93